

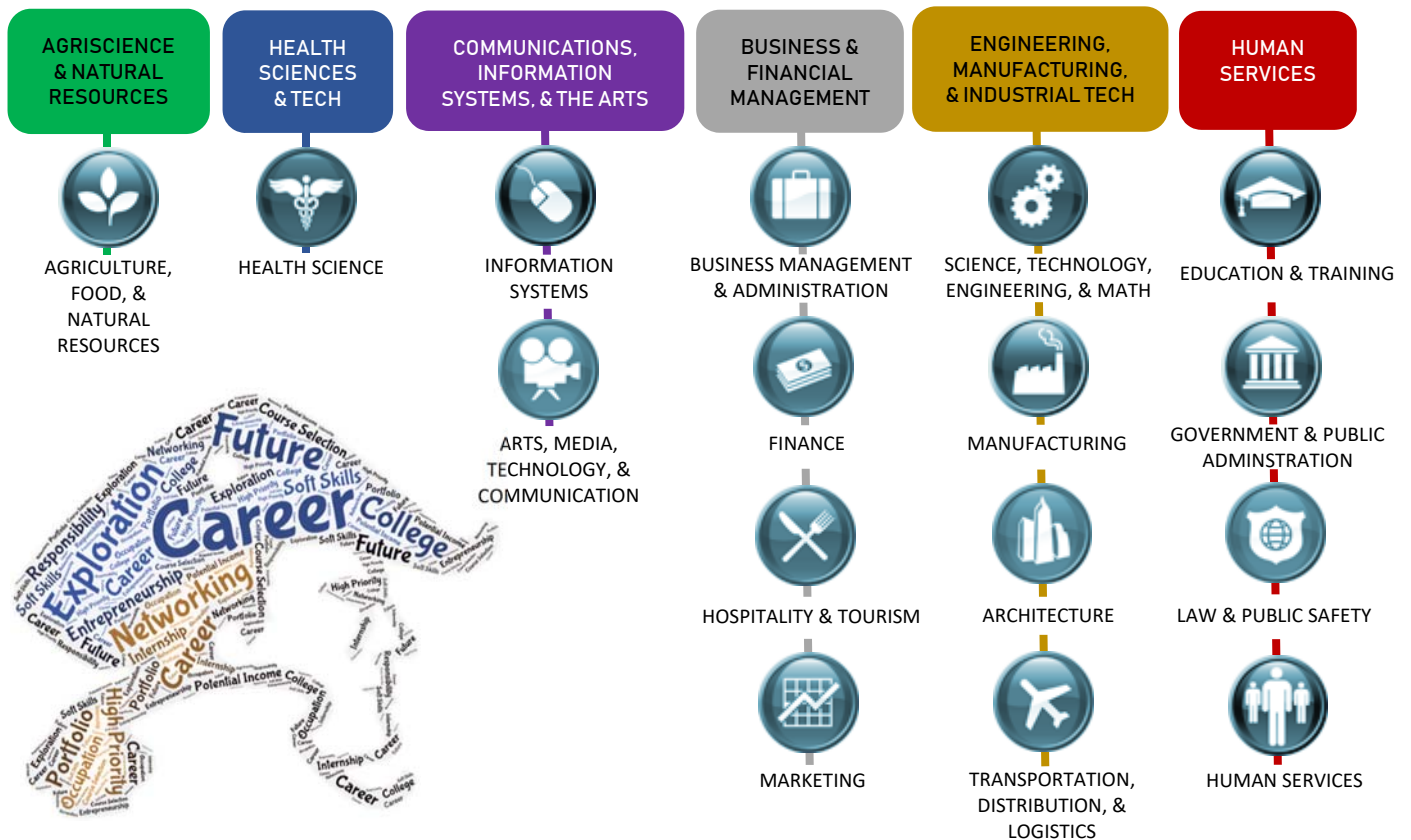
PWHS CAREER PATHWAYS



WHAT ARE CAREER FIELDS, CLUSTERS and PATHWAYS?

Career Pathways provide you with a direction for making informed career decisions. You should attempt to identify career pathways based upon interests, experiences, and abilities. Career clusters group specific careers with common features/skills and designate specific occupations and postsecondary majors related to a chosen Career Field. Career Pathways and Career Clusters will assist you in choosing rigorous courses of study at Plymouth Whitmarsh High School with the goal of preparing you for careers and extended studies.

There are 10 Career Pathways at Plymouth Whitmarsh High School tied to the 16 national Career Clusters. To ensure graduation requirements are met, you should use this course-planning guide to determine required core and elective courses for grades 9-12. While this document is a general guide to be used during course selection planning, consultation with teachers and counselors is essential.



HOW TO BEGIN A CAREER PATH

Are you finding that you struggle with what to do next or which career pathway/direction you want to pursue? That's normal and part of the process! Here is a good place to start when searching for a career path.

1. **SELF ASSESS - THINK ABOUT YOURSELF:** What do you enjoy? In what types of work environments do you thrive? Are you social or do you like to work solo? What do you absolutely NOT like to do? Many of these questions are addressed through your Naviance Career Assessments; go back and review this information!
2. **COMMIT YOURSELF – START DOWN A PATH:** Now that you figured out what you enjoy, take action. This applies to selecting courses, extracurricular activities, and investigating job shadows, internships and community service opportunities. Your course selections and extracurricular activities here at PWHS should reflect a career pathway of interest.
3. **REFLECT ON YOUR EXPERIENCES:** What did you like/not like about your experience/courses of study. Should you continue down this path? If not, repeat steps 1 and 2 until you find your spark!

AGRISCIENCE & NATURAL RESOURCES

Are you a nature lover? Are you practical, curious about the physical work, and interested in plants and animals? Do you enjoy the outdoors (hunting, fishing, mowing the lawn, gardening)? Are you interested in protecting the environment?

Careers in this pathway relate to agriculture, the environment, and natural resources. These include agricultural sciences, earth sciences, environmental sciences, forestry, horticulture and wildlife.

HEALTH SCIENCES & TECHNOLOGIES

Do you like to care for people or animals that are sick or help them stay well? Are you interested in diseases and in how the body works? Do you enjoy reading about science and medicine? Would it be fun to learn first aid or volunteer at a hospital or veterinary clinic?

Careers in this pathway relate to the promotion of health and the treatment of disease. These include research, prevention, treatment and related health technologies.

COMMUNICATIONS, INFORMATION SYSTEMS, & THE ARTS

Are you a creative thinker? Are you imaginative, innovative and original? Do you like to communicate ideas? Do you like making crafts, drawing, playing a musical instrument, taking photos or writing stories?

Careers in this pathway relate to the humanities and performing, visual literacy, and media arts. These include graphic design, writing, film & broadcasting, computer information systems, fine arts, journalism, languages, media & advertising, and public relations.

BUSINESS & FINANCIAL MANAGEMENT

Do you enjoy being a leader, organizing people, and planning activities? Do you like to work with numbers/calculations or ideas? Do you enjoy carrying through with an idea from creation through the end-product? Do you like things neat and orderly? Would you enjoy balancing a checkbook, following the stock market, or holding an office in a club?

Careers in this pathway relate to the business environment. These include entrepreneurship, sales, marketing, finance, accounting, personnel, economics and management.

ENGINEERING, MANUFACTURING, & INDUSTRIAL TECHNOLOGIES

Are you mechanically inclined and practical? Do you like reading diagrams and blueprints, and drawing/designing building structures? Are you curious about how things work and enjoy problem solving? Would you enjoy repairing cars & machinery, wiring electrical circuits, or woodworking?

Careers in this pathway relate to technologies necessary to design, develop, install, and maintain physical systems. These include engineering, manufacturing, architecture, electrician, and construction.

HUMAN SERVICES

Are you friendly, open, understanding and cooperative? Do you like to work with people? Is it important for you to do something that makes life better for other people? Do you like to help friends with family problems? Do you like reading, storytelling, traveling, or tutoring young children?

Careers in this pathway relate to economic, political, and social systems. These include education, government, law and law enforcement, leisure and recreation, military, religion, childcare, social services, and personal services.

ENGINEERING & ROBOTICS

H ENGINEERING 1
 H ENGINEERING 2
 AP ENGINEERING
 AP PHYSICS
 H INNOVATION STUDIO
 PRODUCT DESIGN
 H PRODUCT DESIGN 2
 ROBOTICS 1: BUILD & DESIGN
 H ROBOTICS 2: ADV. APPLICATIONS
 ELECTRONICS
 AP CALCULUS AB
 AP CALCULUS BC
 H CALCULUS
 H COMPUTATIONAL MATH
 CADD
 H CADD 2

LAW & CRIMINAL JUSTICE

H LAW AND LITERATURE
 H PHILOSOPHY & ETHICS
 AP US GOVERNMENT & POLITICS
 AP STATISTICS
 FORENSIC SCIENCE
 LEGAL SYSTEMS
 AP PSYCHOLOGY
 PSYCHOLOGY
 SOCIOLOGY
 *PUBLIC SAFETY

HEALTH SCIENCES

AP BIOLOGY
 AP CHEMISTRY
 ANATOMY & PHYSIOLOGY 1
 ANATOMY & PHYSIOLOGY 2
 H MICROBIOLOGY
 INFECTIOUS DISEASES
 FOOD CHEMISTRY
 AP PSYCHOLOGY
 SPORTS MEDICINE
 LIFEGUARDING
 *ALLIED HEALTH
 *HEALTH CARE SCIENCES

COMPUTER SCIENCE

COMPUTER SCIENCE 1
 H COMPUTER SCIENCE 2
 AP COMPUTER SCIENCE A
 H COMP SCIENCE PRINCIPLES
 H COMPUTATIONAL MATH
 ASPIRING ENTREPRENEURS
 GAMEMAKER PROGRAMMING
 GAME DESIGN
 ROBOTICS 1
 H ROBOTICS 2

PWHS CAREER PATHWAYS

FOLLOW YOUR CAREER PATH BY SELECTING APPLICABLE COURSES OF STUDY OFFERED AT PWHS

*ALL PATHWAYS INCLUDE THE RECOMMENDATION THAT STUDENTS CONSIDER TAKING BOTH (A) CAREER & FINANCIAL MANAGEMENT AND (B) INTERNSHIP AS CORE COURSES IN THE PROCESS

MEDIA & BROADCAST

JOURNALISM

MASS MEDIA PRODUCTION 1
 MASS MEDIA PRODUCTION 2
 H MASS MEDIA PRODUCTION 3
 CREATIVE WRITING
 PUBLICATION 1
 PUBLICATION 2
 FILM APPRECIATION
 PHOTOGRAPHY 1
 AP ENGLISH LANGUAGE
 AP ENGLISH LITERATURE
 SONGWRITING
 *VIDEO, SOUND, & MUSIC
 PRODUCTION

ENVIRONMENTAL

SCIENCES

AP ENVIRONMENTAL SCIENCE
 ENVIRONMENTAL SCIENCE
 H ENVIRONMENTAL SCIENCE
 ASTRONOMY 1
 ASTRONOMY 2
 MARINE SCIENCE
 FOOD CHEMISTRY
 *LANDSCAPING DESIGN &
 CONSTRUCTION



BUSINESS & FINANCE

INTRODUCTION TO BUSINESS
 LEGAL SYSTEMS
 MARKETING
 SPORTS MANAGEMENT
 ASPIRING ENTREPRENEURS
 H ENTREPRENEURSHIP
 ACCOUNTING 1
 H ACCOUNTING 2
 AP ECONOMICS
 H ECONOMICS
 AP STATISTICS
 H COMPUTATIONAL MATHEMATICS
 PROBABILITY & STAT

ART & DESIGN

ART STUDIO 1
 H ART STUDIO 2
 FINE METALS 1
 H FINE METALS 2
 PHOTOGRAPHY 1
 H PHOTOGRAPHY 2
 ASPIRING ENTREPRENEURS
 APPLIED CERAMICS TECH 1
 H APPLIED CERAMICS TECH 2
 GRAPHIC DESIGN
 H ART HISTORY
 H ART MAJOR
 H PHOTO MAJOR
 3D DESIGN PRODUCTION
 AP ART HISTORY
 AP 2D ART & DESIGN
 AP 3D ART & DESIGN
 AP DRAWING
 3D ANIMATION 1
 H 3D ANIMATION 2
 GAME DESIGN
 PUBLICATION 1
 PUBLICATION 2

*VISUAL COMMUNICATIONS

PERFORMING ARTS

CHORUS H CHORUS
 BAND H BAND
 ORCHESTRA H ORCHESTRA
 MUSIC HISTORY
 BLUES & JAZZ
 BROADWAY & MORE
 HOW TO READ MUSIC
 MUSIC THEORY
 SONGWRITING
 INTRO TO THEATER 1
 THEATER 2
 AP MUSIC THEORY
 *VIDEO, SOUND, & MUSIC
 PRODUCTION

MANUFACTURING &

PRODUCTION

PRODUCT DESIGN
 H PRODUCT DESIGN 2
 H INNOVATION STUDIO
 ASPIRING ENTREPRENEURS
 ARCHITECTURAL DRAWING 1
 H ARCHITECTURAL DRAWING 2
 3D DESIGN PRODUCTION
 GRAPHIC DESIGN
 GAME DESIGN
 CADD 1
 H CADD 2
 *BUILDING TRADES